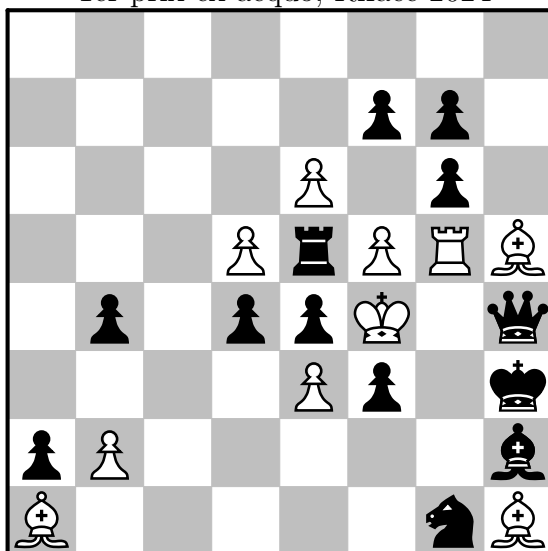
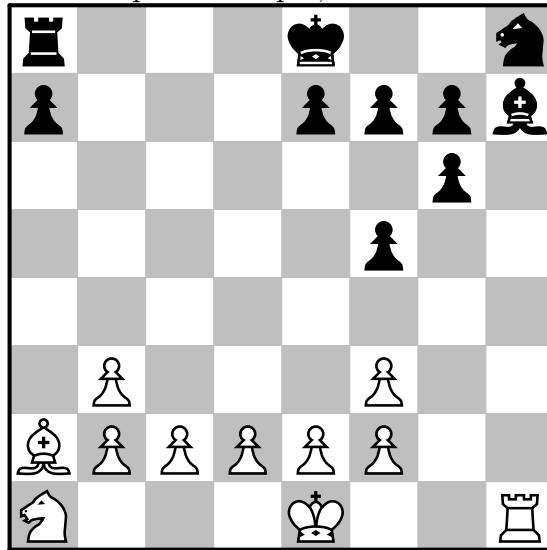


Dmitrij Baibikov  
1er prix ex-aequo, Riface 2024



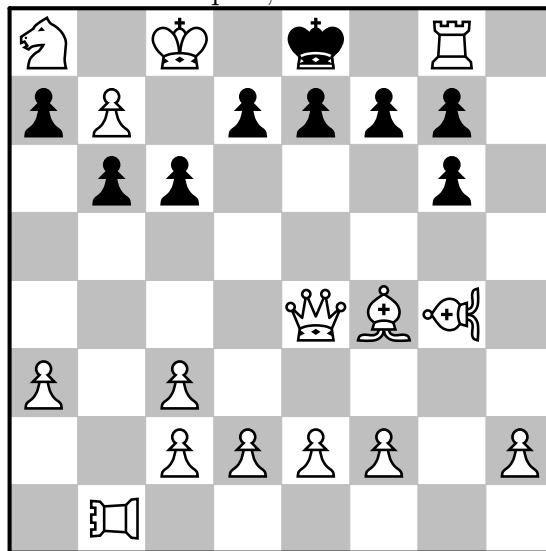
10+13: Add unit(s)  
Carrera Chess 408.

Michel Caillaud  
1er prix ex-aequo, Riface 2024



11+10: Où ont été capturés les fous manquants?  
Carrera Chess 408.

Thierry Le Gleuher  
3ème prix, Riface 2024



15+9: Carrera Chess 408.

Le RN n'a pas bougé.

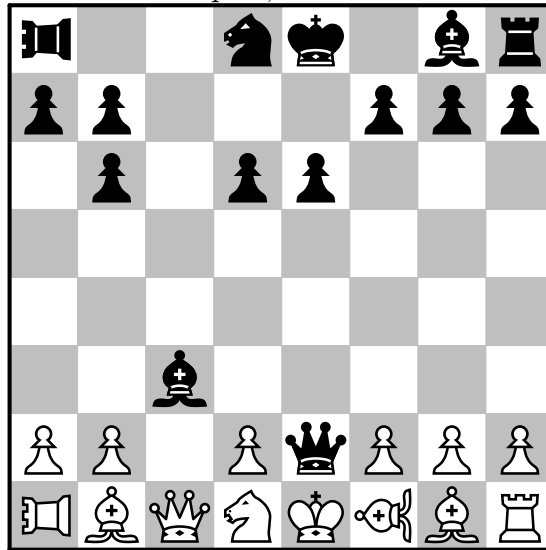
Le 6ème coup blanc a été 6.Rf3.

Dernier coup ?

Quelle a été la position de départ ?

Où a été capturé le CN ?

Dirk Borst  
4ème prix, Riface 2024



14+15: Carrera Chess 408.

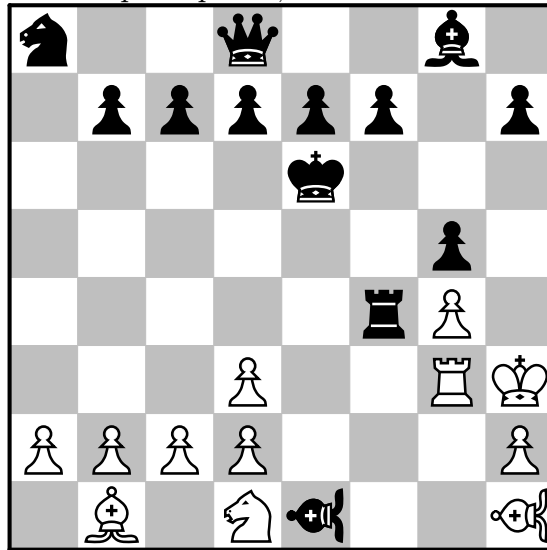
PJ 9.0, 2 solutions, C+.

base: 

forsyth .embqsk.prbr/pppppppp/8/8/8/8/PPPPPPP/.EMBQSK.PRBR  
stip dia9.0

forsyth .em2sk1br/pp3ppp/1p1pp3/8/8/2b5/PP1PqPPP/.EMBQSK.PRBR

Michel Caillaud  
 prix spécial, Riface 2024



12+13: PJ en 24,0 coups. HC+.  
 Carrera Chess 408.

pieces white Ke1 Qd1 Rh1 Bb1g1 Sa1 EMc1 PRf1 Pa2b2c2d2e2f2g2h2

black Ke8 Qd8 Rh8 Bb8g8 Sa8 EMc8 PRf8 Pa7b7c7d7e7f7g7h7

stip dia24.0

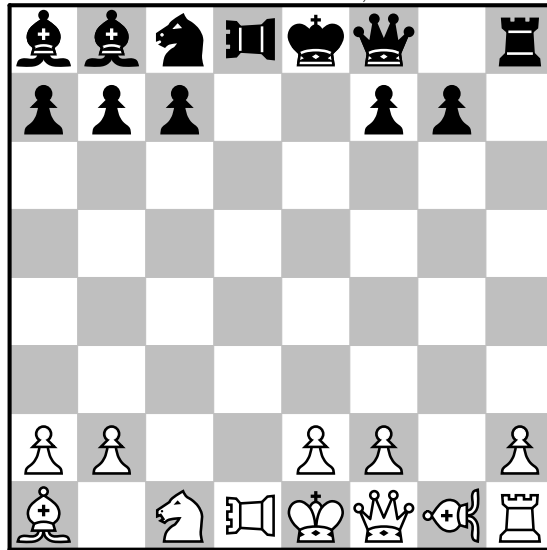
pieces white Kh3 Rg3 Bb1 Sd1 Pa2b2c2d2h2d3g4 PRh1

black Ke6 Qd8 Rf4 Bg8 Sa8 Pg5b7c7d7e7f7h7 PRe1

constraints Bg1-f2 d4(4) Pf2xe3 Bb8-a7-b6-a5-c3-e3 Pa7xb6xc5xd4xe3-e1=R-f4

Bernd Graefrath

1ère mention d'honneur, Riface 2024



12+12: Carrera Chess 408.

PJ 7.0, C+

pieces white Ke1 Qf1 Rh1 Ba1b1 Sc1 Pa2b2c2d2e2f2g2h2 EMd1 PRg1

black Ke8 Qf8 Rh8 Ba8b8 Sc8 Pa7b7c7d7e7f7g7h7 EMd8 PRg8

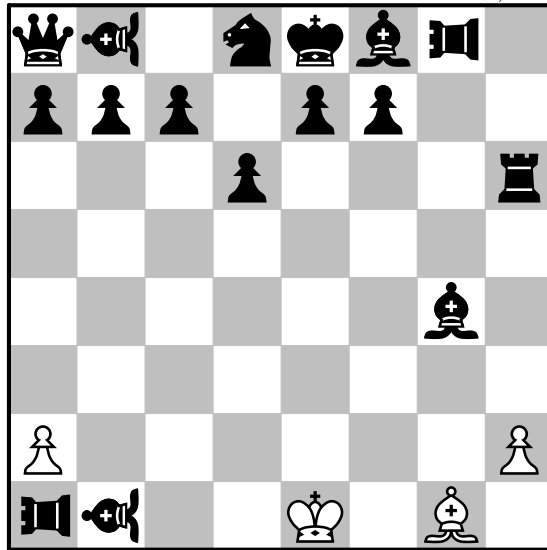
stipulation a=>b7.0

pieces white Ke1 Qf1 Rh1 Ba1 Sc1 Pa2b2e2f2h2 EMd1 PRg1

black Ke8 Qf8 Rh8 Ba8b8 Sc8 Pa7b7c7f7g7 EMd8

Also tested by François Labelle over the 408 start positions. Also tested shorter lengths (-0.5 and -1.0).

Thierry Le Gleuher  
2ème mention d'honneur, Riface 2024



Carrera Chess 408.

PJ 15.0, C+

C+ Jacobi 0.7.5 en 4 h 49 min 18 sec

François Labelle a tout testé sauf:

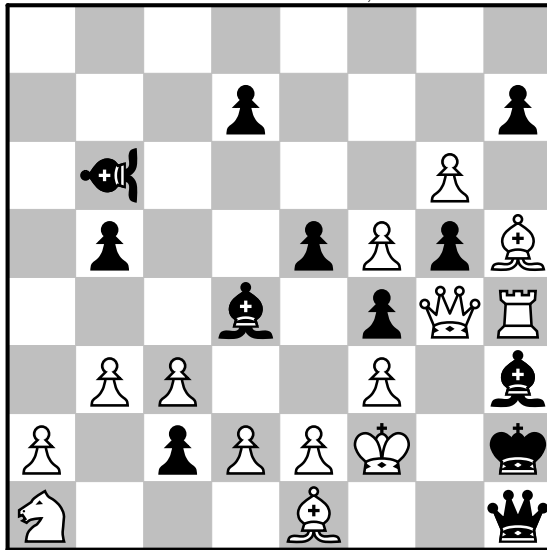
forsyth q.prbskb.emr/pppppppp/8/8/8/8/PPPPPPPP/Q.PRBSKB.EMR

stipulation a=>b15.0

forsyth q.pr1skb.em1/ppp1pp2/3p3r/8/6b1/8/P6P/.em.pr2K1B1

Andriy Frolkin

3ème mention d'honneur, Riface 2024



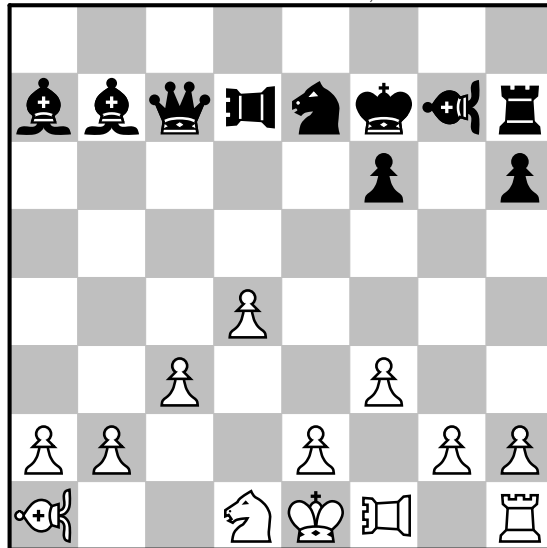
14+12: Release the position.

Carrera Chess 408.

base:



Thierry Le Gleuher  
4ème mention d'honneur, Riface 2024

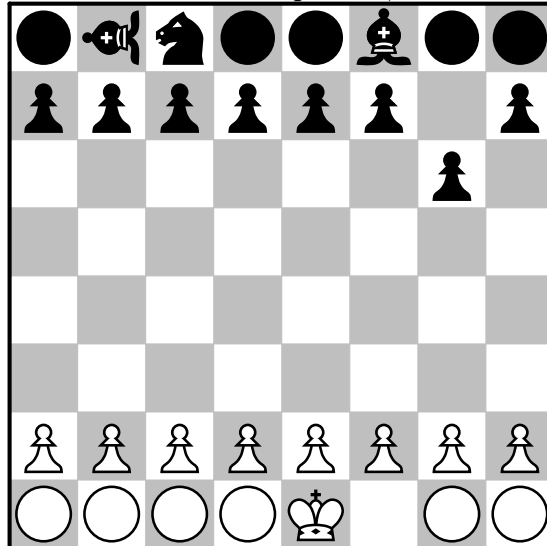


13+10: Carrera Chess 408<sup>2</sup>.  
PJ 10.0, C+

forsyth bbq.emk.prsr/pppppppp/8/8/8/8/PPPPPPP/.PRBBSK.EMQR  
stipulation a=>b10.0  
forsyth 8/bbq.emsk.prr/5p1p/8/3P4/2P2P2/PP2P1PP/.PR2SK.EM1R

Eric Pichouron  
Thierry Le Gleuher

Mention d'honneur spéciale, Riface 2024



15+16: Carrera Chess 408

PJ 7,5. C+

pieces white Ke1 Qd1 Ra1 PRb1 Sc1 Bf1g1 EMh1 Pa2b2c2d2e2f2g2h2

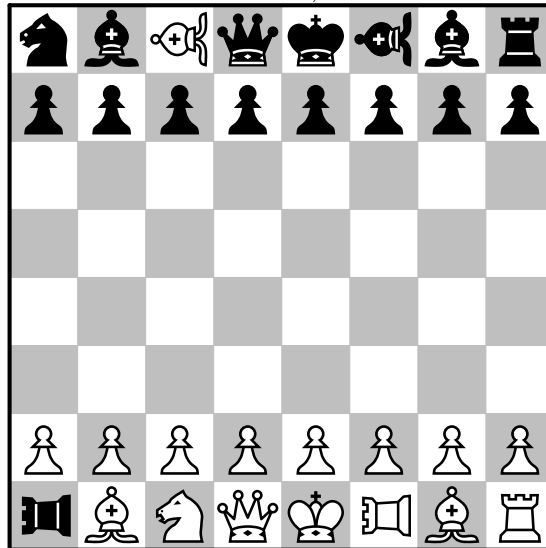
black Ke8 Qd8 Ra8 PRb8 Sc8 Bf8g8 EMh8 Pa7b7c7d7e7f7g7h7

stipulation a=>b 7.5

forsyth r.prsqkbb.em/pppppp1p/6p1/8/8/8/PPPPPPPP/R.PRSQK1B.EM

Tested by François Labelle over the 408 start positions. Also tested shorter lengths (-0.5 and -1.0).

François Labelle  
1er recommandé, Riface 2024



16+16: PJ en 5,5 coups  
Carrera Chess 408, C+.

EnglishN

forsyth cbnqkabr/pppppppp/8/8/8/8/PPPPPPPP/CBNQKABR

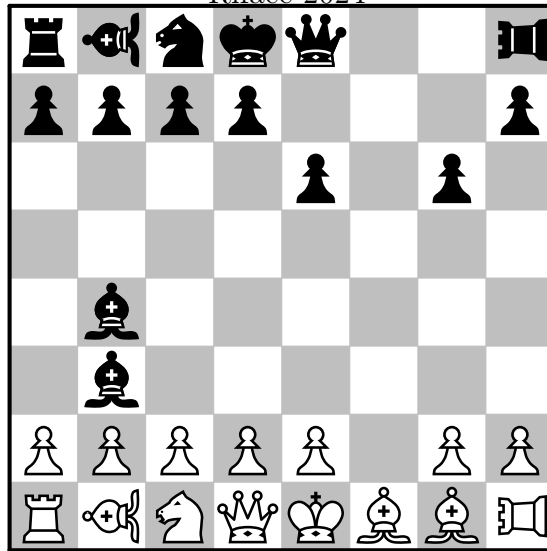
stip a=>b 5.5

forsyth nbAqkabr/pppppppp/8/8/8/8/PPPPPPPP/cBNQKCBR

Tested by François Labelle over the 408 start positions. Also tested shorter lengths (-0.5 and -1.0).

Eric Pichouron

Riface 2024



15+15: PJ en 8,5 coups. C+

Carrera Chess 408.

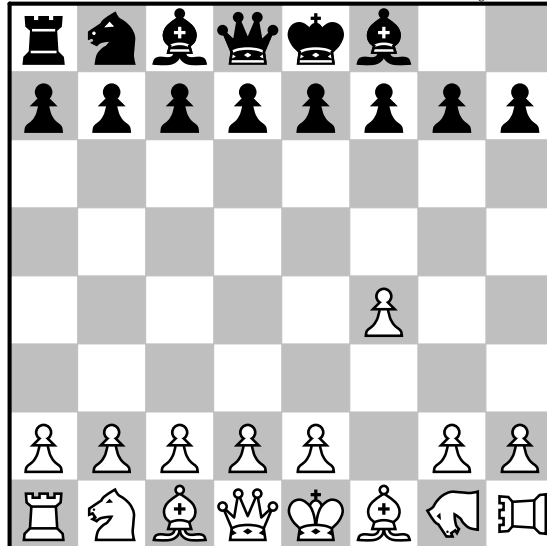
base: 

forsyth r.prsqkbb.em/pppppppp/8/8/8/8/PPPPPPP/R.PRSQKBB.EM

stipulation a=>b 8.5

forsyth r.prsq2.em/pppp3p/4p1p1/8/1b6/1b6/PPPPP1PP/R.PRSQKBB.EM

Pascal Wassong  
 3ème recommandé, Riface 2024  
 À la mémoire de John Beasley



16+14: PJ en 4,5 coups  
 Carrera Chess 408<sup>2</sup>.

**Solution:**

1.PRf3 EMg6 2.PRd4 EMg3 3.fxg3 PRh6 4.PRg1 PRf4 5.gxf4

Circuit de la princess g1 pour perdre un temps. Cases d'origine des PR et EM non précisées.

forsyth rsbqkb.pr.em/pppppppp/8/8/8/8/PPPPPPP/RSBQKB.PR.EM

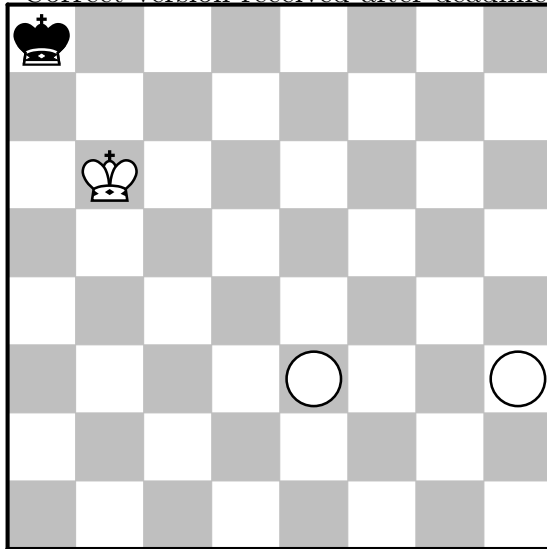
stipulation a=>b4.5

forsyth rsbqkb2/pppppppp/8/8/5P2/8/PPPPP1PP/RSBQKB.PR.EM

**Andrew Buchanan**

Hors concours, Riface 2024

Correct version received after deadline



3+1: White princess & knight as white disks

Win in 1.

Chess in disguise (see [Chessics](#) 4, 8 and 10).